



 KNIT | SKILL LEVEL: EASY

## ABBREVIATIONS

**Alt** = Alternat(e)(ing)

**Approx** = Approximately

**Beg** = Begin(ning)

**K** = Knit

**P** = Purl

**Pat** = Pattern

**Rep** = Repeat

**RS** = Right side

**Sl1wyib** = Slip next stitch purlwise with yarn at back of work

**Sl1wyif** = Slip next stitch purlwise with yarn at front of work

**St(s)** = Stitch(es)

**Tog** = Together

**WS** = Wrong side

**Yb** = Bring yarn to back of work

**Yf** = Bring yarn to front of work

## MEASUREMENT

Approx 24" [61 cm] square

## GAUGE

19 sts and 26 rows = 4" [10 cm] in pat.

## INSTRUCTIONS

### FRONT

With A, cast on 115 sts.

**1st and 2nd rows:** Knit.

**3rd row:** With B, K1. Sl1wyib. \*K3. Sl1wyib. Rep from \* to last 5 sts. K3. Sl1wyib. K1.

**4th and WS rows:** With same color as previous row, knit all knit sts and slip all slipped sts as follows: yf. Sl1wyif. yb.

**5th row:** With A, K2. \*Sl1wyib. K1. Rep from \* to last st. K1.

**7th row:** With B, K1. Sl1wyib. \*K3. Sl1wyib. Rep from \* to last 5 sts. K3. Sl1wyib. K1.

**9th row:** With A, knit.

**11th row:** With B, K1. Sl1wyib. \*K1. Sl1wyib. K2. Rep from \* to last 5 sts. K1. Sl1wyib. K1. Sl1wyib. K1.

**13th row:** With A, K2. \*Sl1wyib. K1. Rep from \* to last st. K1.

**15th row:** With B, K1. Sl1wyib. \*K1. Sl1wyib. K2. Rep from \* to last 5 sts. K1. Sl1wyib. K1. Sl1wyib. K1.

**17th and 18th rows:** With A, knit. Rep 3rd to 18th rows for pat until work from beg measures approx 24" [61 cm], ending on 10th or 18th row.

With A, knit 2 rows. Cast off.

## MATERIALS

**Caron® Cotton Cakes™** (8.8 oz/250 g; 530 yds/485 m)

**Contrast A** Coral (57027) **2 balls**

**Contrast B** Hydrangea (57020) **1 ball**

Size U.S. 7 (4.5 mm) knitting needles **or size needed to obtain gauge.**  
24" [61 cm] square pillow form.

**BACK** (make Bottom Half and Top Half alike)

With A, cast on 120 sts.

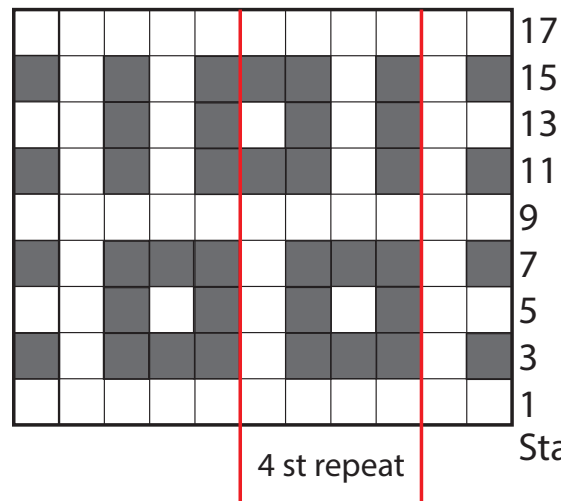
**1st row:** \*K2. P2. Rep from \* to end of row.

Rep last row of (K2. P2) ribbing for 2" [5 cm].

Beg on a knit row, proceed in stocking st until piece from beg measures 14" [35.5 cm], ending on a purl row. Cast off.

### Assembly

With WS tog, overlap Back pieces to match size of Front, with ribbed sections in center to create opening to insert pillow form. Sew outer edge seams.



Note: Each row of chart is equal to 2 rows

□ = Contrast A

■ = Contrast B